



## CMSA UPGRADES

### CMSA COMMISSIONERS

**Dean DiGiovanni,**  
Chair

San Rafael Sanitation District

**Michael Boorstein**

Vice-Chair

Ross Valley Sanitary District

**Eli Beckman,**

Secretary

Sanitary District No. 2

**Tom Gaffney,**

Ross Valley Sanitary District

**Maribeth Bushey**

San Rafael Sanitation District

### INSIDE:

#### TECHNICAL SERVICES

•

#### OPERATIONS & MAINTENANCE

•

#### FINANCE ADMINISTRATION HUMAN RESOURCES

### A NACWA Peak Performance Agency

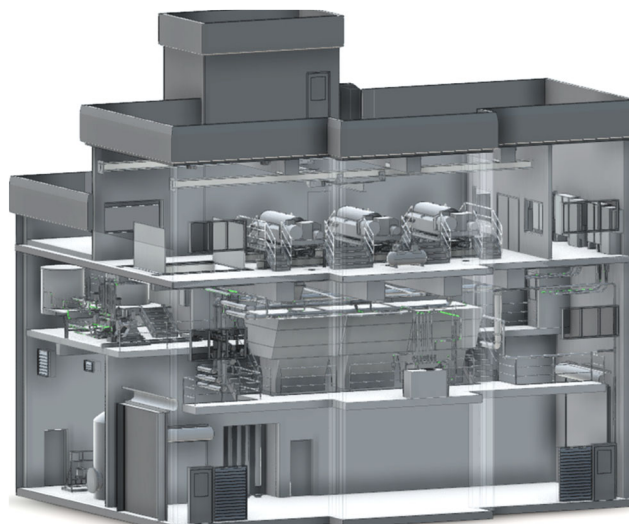
1301 Andersen Drive  
San Rafael, CA 94901  
Phone 415.459.1455  
Fax 415.459.3971  
[www.cmsa.us](http://www.cmsa.us)

Jason R. Dow, P.E.  
General Manager



### Centrifuge Replacement Project Construction Beginning

Bids for the Centrifuge Replacement Project were received in late August, and the project was awarded to GSE Construction for \$2.5 million, significantly under budget. The project includes replacing three centrifuges, replacing a monorail with a bridge crane, widening a



3D Model of New Centrifuges inside the  
Solids Handling Building

floor hatch, replacing the centrifuge control panels, and replacing the master programmable logic controller. The pre-purchased centrifuges are expected to arrive in October, and the pre-purchased bridge crane will be delivered in spring 2026. To allow continued dewatering operations during construction, the work is sequenced into four different phases, with construction anticipated to begin in the fall and continue through to the end of 2026. The existing centrifuges will be salvaged and the Agency has contracted with local company to purchase and pick up the units once they are removed during construction.

### Chlorine Contact Tank Sluice Gate Replacement

Operations supported maintenance activities by conducting three separate plant flow diversion, and routing all influent flow to the off-line primary clarifiers to allow for the replacement of three CCT Sluice Gates. The existing cast iron sluice gates and electric actuators were removed and replaced by Maintenance with a new stainless-steel fabricated gates and upgraded electric actuators. This work included removing the existing frame, gate, and actuator; sanding and cleaning the mounting surfaces; sealing the new gate to the CCT wall; performing alignment adjustments; and wiring up the new actuator.



Before



After

## TECHNICAL SERVICES PROJECTS

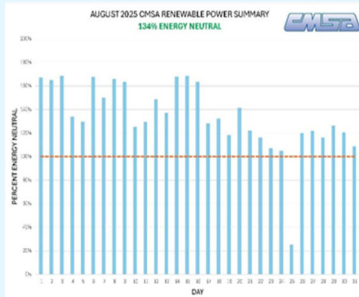


Main Electrical Switchgear

### Switchgear Inspection

The last comprehensive inspection and testing of the breakers in the electrical switchgear and select motor control centers was in 2023. Given the age of the equipment, our consulting electrical engineer recommended retesting the equipment every two years to ensure the safe operation of our electrical systems and minimize the risk of unplanned outages. This year's inspection was completed in September 2025, and only minor issues were identified.

### All Time Record Renewable Power Production



CMSA's power generation program reached a significant milestone by producing 134 percent of the facility's power demand via renewable electricity in the month of August, 2025. Excess electricity is exported to the PG&E grid and sold to MCE. CMSA has received increased food waste to achieve this impressive milestone, one of only a handful of wastewater facilities in the country that produce more electricity than they consume. CMSA is working on further increasing food waste quantities to consistently produce 150 percent of the facility's power demand.

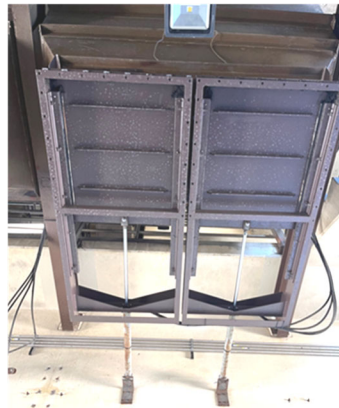
### Primary Clarifiers and Chlorine Contact Tank Rehabilitation Project Complete

The Agency's Capital Improvement Program includes rehabilitation of the Agency's seven primary clarifiers between 2024 and 2029. Following the successful rehabilitation of Primary Clarifier No. 1 last year, staff finalized the designs and awarded a contract for the rehabilitation of Primary Clarifiers No. 2 and 3. The project also included the rehabilitation of the concrete and coating for Chlorine Contact Tank No. 4 and the Sodium Bisulfite Spill Vault and all work was completed in August 2025 ahead of schedule and within budget.



Recoated Steel Launder Mechanisms in Primary Clarifiers

### Biosolids Hoppers Coating Project Complete

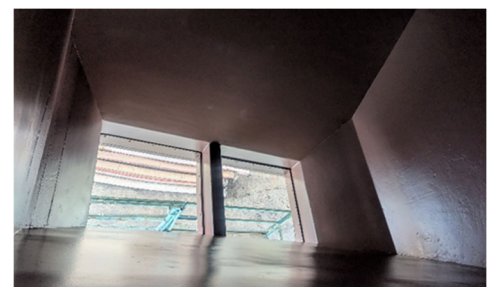


New Coating

In August, as part of a capital improvement project, maintenance staff in collaboration with a contractor removed corroded slide gates and frames from Biosolids Hopper No. 1 and replaced them with new coated carbon steel. These gates are crucial as they open and close to load Biosolids for transport offsite for beneficial reuse. The inside of Biosolids Hopper No. 1 was also blast cleaned and coated to extend its service life with Biosolids Hoppers No. 2 and 3 scheduled for completion by the end of September 2025.



Before



After



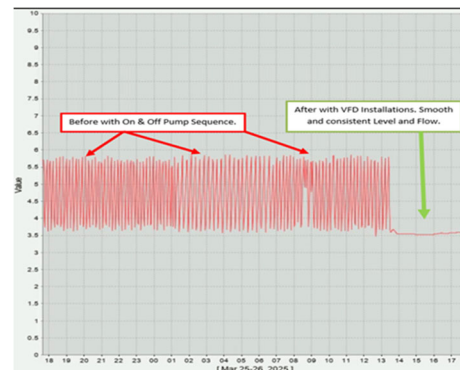
## OPERATIONS AND MAINTENANCE DEPARTMENT ACTIVITIES

### Process Waste Pump Drives Upgrades

Upgrades were made to the facility process waste sump, which receives a large portion of internal wastewater from the solids handling building, including centrate, a nutrient-rich waste stream generated from centrifuge dewatering operations. Staff replaced the basic on & off pump control sequencing system with variable frequency drives (VFD), allowing the pumps to run at controlled speeds and associated flows. This VFD pumping setup provides smoother, more consistent nutrient loading back to the headworks, improving treatment stability in preparation for upcoming nutrient removal requirements.



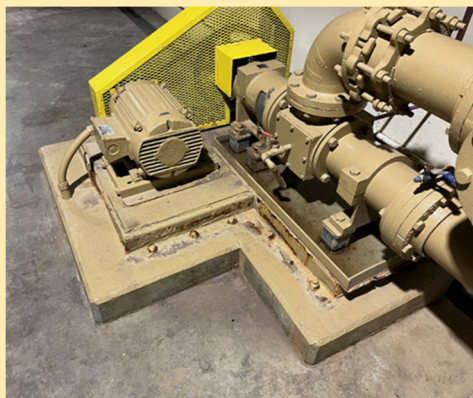
New VFD's



Stable Pumping Output

### Primary Sludge Pump Base Replacements

Maintenance is replacing several of the original steel pump and motor bases for the primary sludge pumps with new stainless-steel bases. Stainless-steel better resists rusting, has a longer infrastructure lifespan, and improves reliability by preventing the pump and motor from shifting caused by corrosion.



Original Pump No. 1



New Pump No. 2 Rebuild in Progress

### Jenbacher Cogeneration Engine Maintenance



Maintaining proper spark plug function is critical to ensuring reliable engine performance and emissions compliance. As part of preventive maintenance, staff perform weekly spark plug voltage checks. The manufacturer's key performance indicator is set at 30 kV. Recently, voltage readings surpassed the 30 kV threshold. Upon engine shutdown and inspection, staff confirmed that the spark plug electrodes were significantly worn, and were in service for approximately 11,000 operating hours. Based on this assessment, staff replaced all spark plugs which aligns with the typical service cycle of 16-18 months.

### Centrifuge Sludge Feed Pumps

Installation of replacement Variable Frequency Drives (VFD's) for the centrifuge sludge feed pumps began in August. The new VFD's are more energy-efficient and designed for longer service life. Centrifuge sludge feed pumps No. 1 and 2 are complete, with pump No. 3 scheduled for completion by the end of September 2025.



Before



After

## FINANCE & ADMINISTRATION DEPARTMENT

### FY26 and FY27 Biennial Budget

The Agency successfully drafted and the Board approved a new biannual budget for FY26 and FY27. Included in this budget are the Agency's plans for maintaining its infrastructure, promoting employee wellbeing, as well as the various funding sources to meet its spending goals. The full document can be found at <https://www.cmsa.us/finance>.

### Upcoming FY25 Audit Conclusion

The Agency's annual financial audit has entered its Final Phase where Maze & Associates is reviewing the final general ledger and financial statements. Once reviewed, their audit opinion and findings will be issued and presented to the Board in November 2025 as part of disclosing material and relevant events as per American Institute of Certified Public Accountants (AICPA) guidelines.

### Updated Fee Ordinance

The Agency's Fee Ordinance (2025-01) was adopted by the Board allowing for clearer guidance to staff and other stakeholders on how recreation vehicle (RV) dumping fees are calculated as well as the need for supporting documentation on capacity charge collections. The updated ordinance can be found at <https://www.cmsa.us/documents/ordinances>.

### Updated Employee Benefits Guide

The Agency's employee benefits guide was recently updated with current information to better assist Agency employees on their benefits programs. Some of the changes include placing higher priority information further in front of the guide, updating benefit and rate information, and adding policy references to ensure an information relevant document. The guide can be found at <https://www.cmsa.us/employment/benefits>.



Government Finance Officers Association

**Financial Reporting Achievement Award for the Annual Comprehensive Financial Report:** June 30, 2024

23 Consecutive years

**Outstanding Achievement in Popular Annual Financial Reporting Award :** June 30, 2024

15 Consecutive years

**Distinguished Budget Presentation Award :** August 18, 2025

12 years



**Award for Platinum Peak Performance:** June 30, 2024

8 Consecutive years of permit compliance

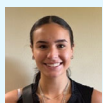
## NEW EMPLOYEES



**Michael Cariglio** joined the Agency in August 2025 as an Institutional Utility Laborer. He previously worked as an Assistant Manager at Cinemark. He also has hands-on experience with construction projects, including fence building, tile cutting, and painting. Outside of work, Michael enjoys hiking, swimming, and kayaking!



**David Sansone** joined the Agency in August 2025 as a Laboratory Intern. David has a bachelor's degree in molecular, cellular and developmental biology from the University of California, Santa Cruz. David will support laboratory staff with sampling and source control management.



**Myranda (Mo) Lynch** joined the Agency in June 2024 summer and returned summer 2025 as a Laboratory Intern. Myranda is an Environmental Science and Policy major at Chapman University, with a minor in Political Science. In September, Myranda was offered a full-time position as a laboratory analyst with the Napa San.